

PREP Performance Measures

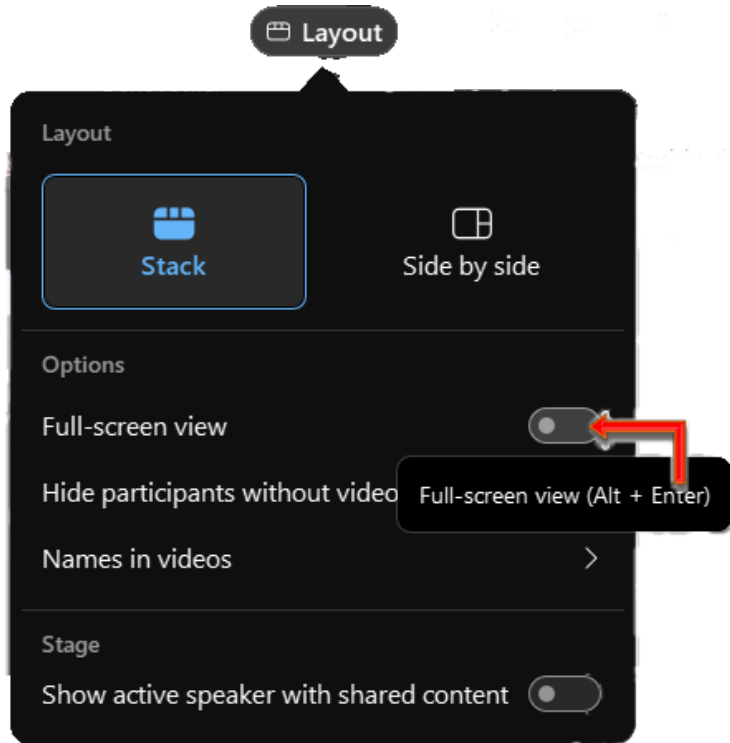
Using Benchmarks for Program Improvement

May 14, 2025

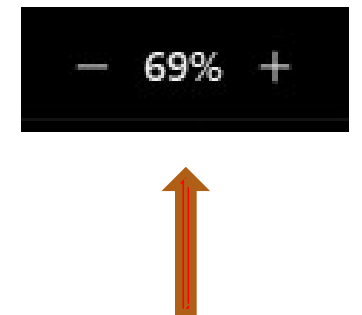
Presented by Mathematica

Sheila Cavallo • Lauren Murphy • James Troxel • Lara Hulsey

Adjusting the webinar screen

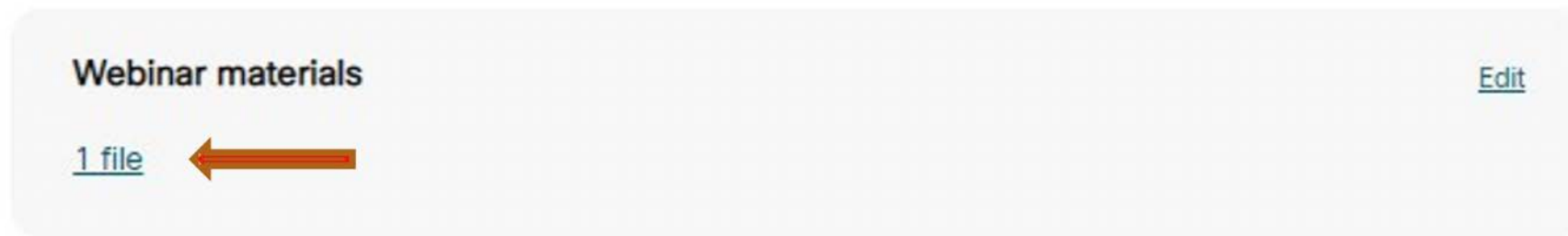


- All attendees will be muted for the duration of today's webinar
- To enter or exit full-screen mode, toggle the “Full-screen view” switch via the Layout button in the top right corner of your window
- To change the size of the text and shared content in the webinar, use the + and – buttons at the top of your screen



Event materials and recording

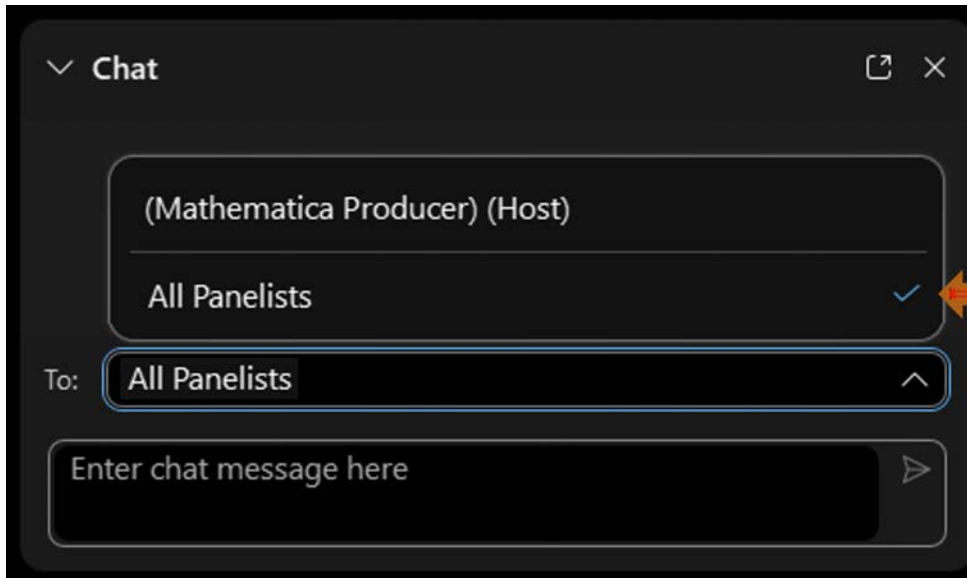
- Slides are available on the meeting information page in the section titled Webinar materials:



- The slides and a recording of this webinar will be posted to the [PREP Performance Measures](#) website

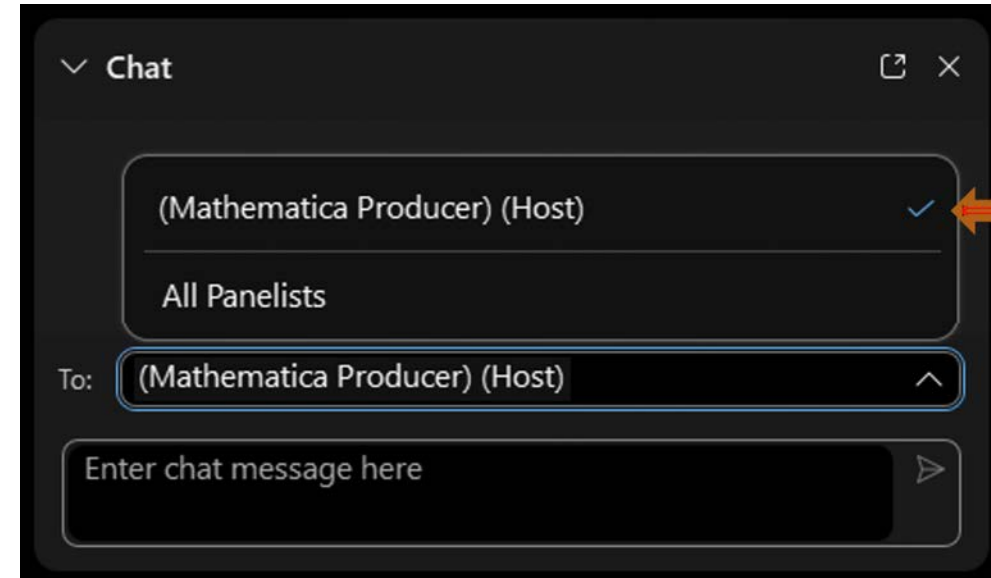
Q&A and technical assistance

- To submit questions for presenters, please use the Chat feature
- Select “All Panelists” from the “To” drop-down list, type your message, and press enter



The screenshot shows a chat window titled 'Chat' with a close button. Below the title bar, there is a list of recipients: '(Mathematica Producer) (Host)' and 'All Panelists'. The 'All Panelists' option is selected, indicated by a blue checkmark. Below this list is a 'To:' dropdown menu which also shows 'All Panelists' as the selected option. At the bottom, there is a text input field with the placeholder 'Enter chat message here' and a send button (a right-pointing triangle).

- To request technical assistance, please select “Host” from the “To” drop-down list before sending your message



The screenshot shows the same chat window. In this instance, the '(Mathematica Producer) (Host)' option is selected in the recipient list, indicated by a blue checkmark. The 'To:' dropdown menu also shows '(Mathematica Producer) (Host)' as the selected option. The text input field and send button remain the same.

Closed captioning

- Closed captioning may be turned on or off by clicking the CC icon in the lower left corner of your screen



Welcome and Introductions

On the webinar today



Sheila Cavallo
Managing
Consultant



Lauren Murphy
Deputy Project
Director



James Troxel
Senior Data
Visualization
Analyst



Lara Hulsey
Principal
Researcher

Agenda

- **Welcome and introductions**
- **Providing some context**
- **Explaining benchmarks**
- **Introducing the PREP federal benchmarks**
- **Monitoring benchmarks using the PREP dashboard**
- **Q&A**

Providing some context



Why the PREP performance measures matter



Demonstrating
grantee impact



Supporting your
work and
strengthening
the field



Powering continuous
quality improvement
(CQI)

Benchmarks support CQI



- Points of reference for measurement
- Tools for program monitoring and improvement

Explaining benchmarks



What does “benchmark” mean?

- From Merriam-Webster

As a noun

- A benchmark is a point of reference from which measurements may be made.

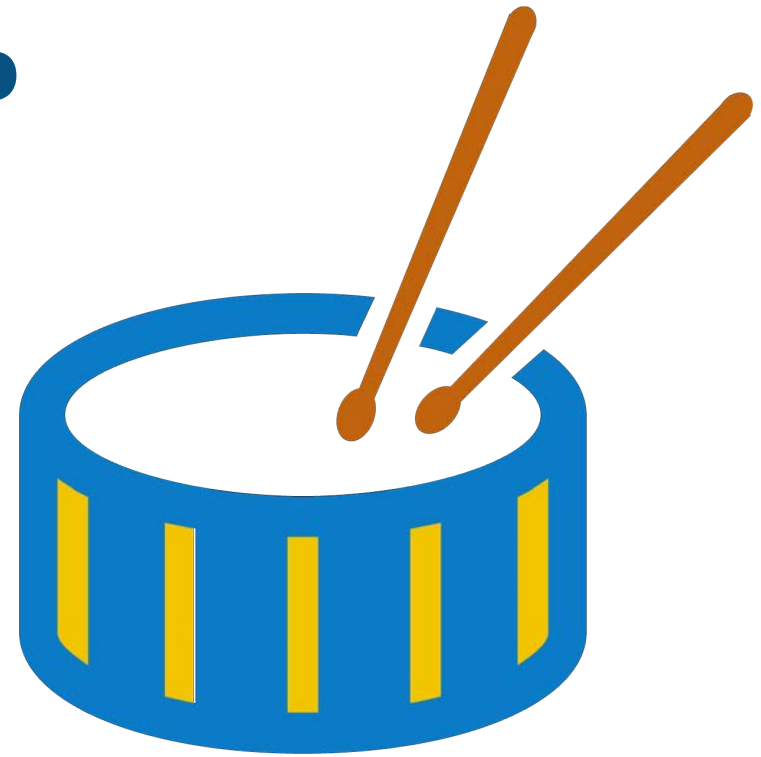
As a verb

- To benchmark is to study something for purposes of improving performance.

What does a PREP “benchmark” mean?

- **For PREP, benchmarks are**
 - **A combination of the specific performance measure and a target for the measure**
 - **Intended to be achievable**

Introducing the PREP federal benchmarks



(drumroll, please...)

And here they are... the initial PREP benchmarks

Category	Performance measure	Target
Support for implementation	Percentage of PREP facilitators trained in delivering the core curriculum	At least 95%
Support for implementation	Percentage of PREP facilitators observed at least once	At least 75%
Cost	Percentage of funding obligated for direct service provision (youth programming)	At least: 50% for State and Competitive ^a 40% for Tribal and PREIS
Dosage	Percentage of youth who completed at least 75 percent of the intended program dosage	At least 75%
Program content	Percentage of youth served by evidence-based programs	At least: 90% for State and Competitive N/A for Tribal and PREIS

Where do the PREP benchmarks come from?

- Why these specific measures?
 - These five items, measured as percentages:
 - were selected from among the full range of performance measures
 - are measures suitable for defining common targets across grant recipients
- How did ACF set the specific targets for these?
 - Informed by feedback from FPOs and program leadership
 - Based on past grantee performance
 - Intended to be attainable



Monitoring benchmarks using the PREP dashboard



Let's Demo!

Some examples of how to use the dashboard for monitoring

- Grant recipients and POs can use benchmarks to discuss progress
- ACF can use benchmarks to identify areas for additional technical assistance
- Grant recipients can use their 2023-24 data (available now) to determine current status and formulate plans for reaching the benchmarks
- Grant recipients can use their 2024-25 data (available this fall) for refining plans for meeting the benchmarks in 2025-26



Q&A

We're here to help!



Sydney



Katie



Sheila

**For additional support, contact the Mathematica
PREP Performance Measures Help Desk Team:**

PREPPerformanceMeasures@mathematica-mpr.com

1-855-267-6270 (toll-free)