

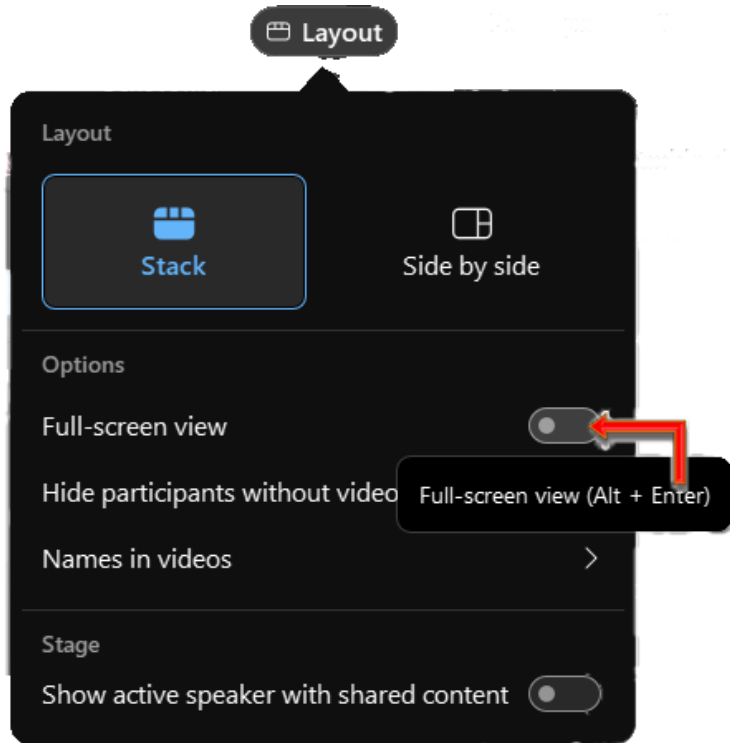
PREP Performance Measures

Welcome to the New Dashboard

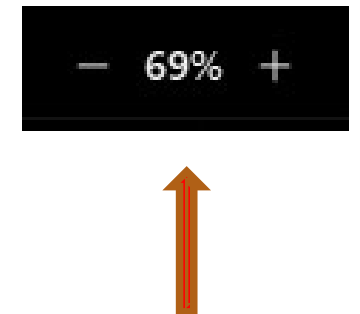
Presented by Mathematica

June 13, 2024

Adjusting the webinar screen



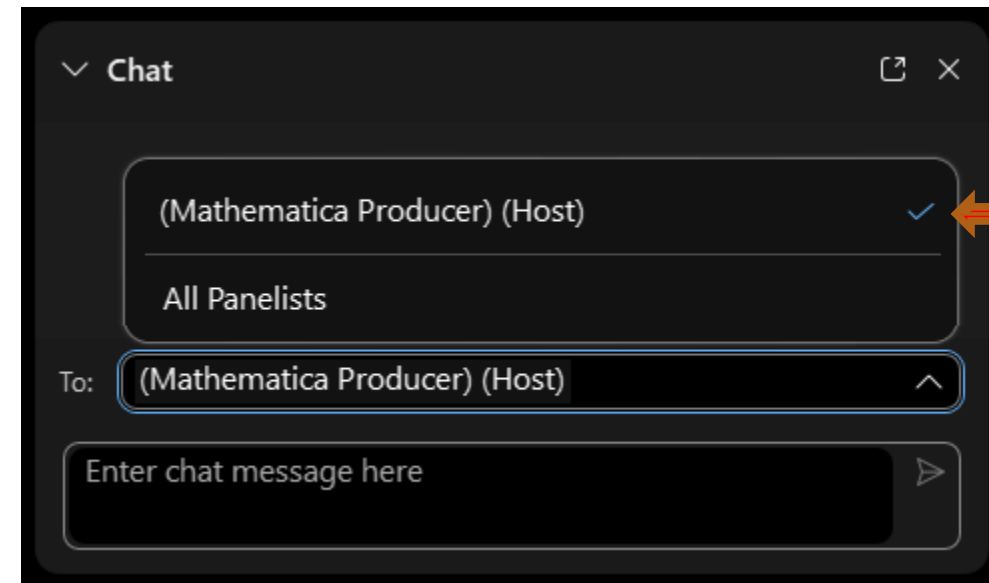
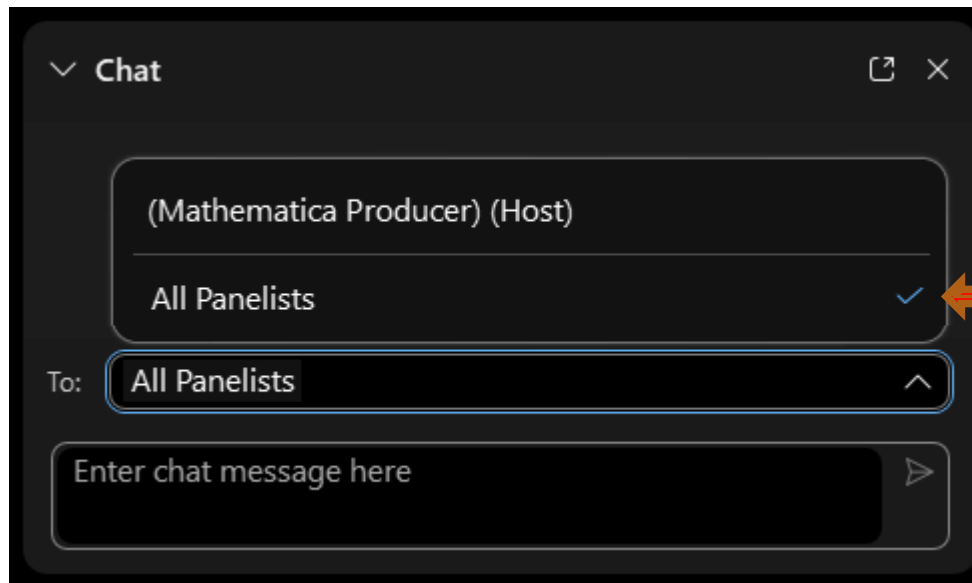
- To enter or exit full-screen mode, toggle the “Full-screen view” switch via the Layout button in the top right corner of your window
- To change the size of the text and shared content in the webinar, use the + and – buttons at the top of your screen



Q&A and technical assistance

- To submit questions for presenters, please use the Chat feature
- Select “All Panelists” from the “To” drop-down list, type your message, and press enter

- To request technical assistance, please select “Host” from the “To” drop-down list before sending your message



Closed captioning

- Closed captioning may be turned on or off by clicking the CC icon in the lower left corner of your screen



Welcome

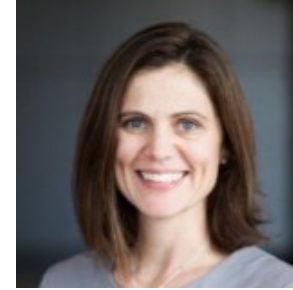
Here for today's webinar



Sheila Cavallo
Managing
Consultant



James Troxel
Senior Data
Visualization
Analyst



Marcy Gialdo
Director,
Business Systems
Analysis



Lara Hulsey
Principal
Researcher

Agenda

- **Welcome**
- **Key Dates/Reminders**
- **Review of Logging In**
- **The New Dashboard**
- **Q&A (and feedback!)**

Key dates

What's coming	When it will happen
New dashboard soft launch	Thursday, June 13 th , 2024
Summer data submission opens	Monday, July 1 st , 2024
Summer data submission closes	Friday, August 16 th , 2024

Reminder

- **There will be no extension to the data submission period.**
- **All data must be submitted by Friday, August 16th.**
 - **If you have sub-recipients, this includes all their data, too.**
 - **As the grant recipient, you are responsible for making sure all data are submitted on time.**



Logging In

Logging in: username and password

- Your username is the email address that you signed up with (you get the PREP emails at this address).
 - It is case sensitive. Check the address on the registration email we sent to you for this event to confirm the capitalization.
- Your password is the one you set back in January or February when you set up your account.

Performance Measures Portal

About the PREP Performance Measures

The federally-funded Personal Responsibility Education Program (PREP) supports efforts to educate youth on both abstinence and contraception for the prevention of pregnancy and sexually transmitted infections through evidence-based and evidence-informed programs, elements of effective programs, and innovative strategies. Programs also educate youth on adulthood preparation subjects. To understand whether grant objectives are being met and to contribute to lessons learned, ACF collects data on performance measures from all PREP grantees.

[Resources & Training](#)

PREP
Personal Responsibility
Education Program

Performance Measures Portal

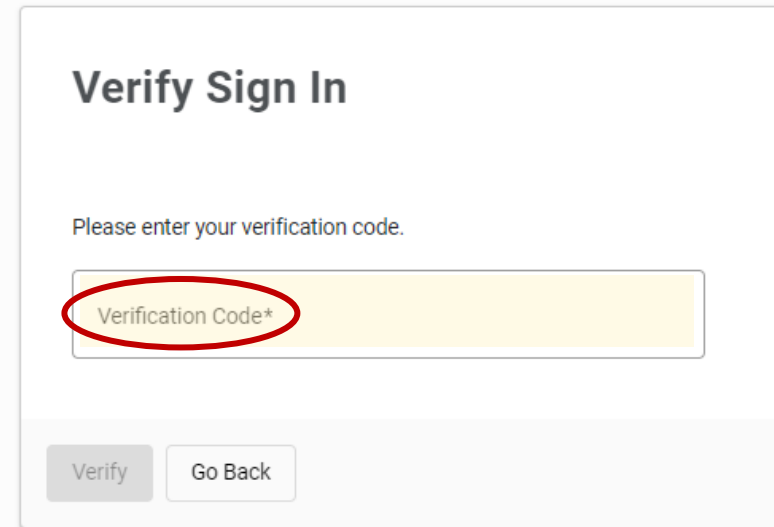
Username*
Beyonce@slayintheperformancemeasures.com

Password*
.....

[Sign In](#) [Forgot your password?](#)

Logging in: multifactor authentication (MFA)

- The verification code will appear inside the authenticator app on your phone.
- It does not come to you in an email or a text message.
- You must open your authenticator app and retrieve the code there.



Verify Sign In

Please enter your verification code.

Verification Code*

Verify Go Back



Google



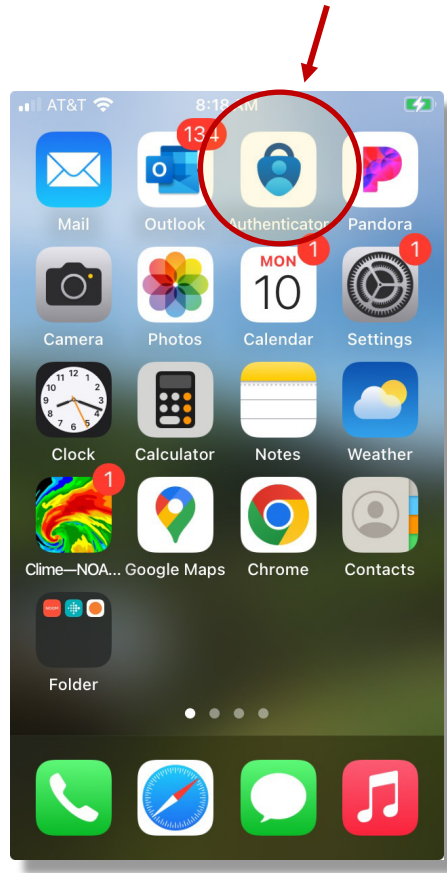
CISCO



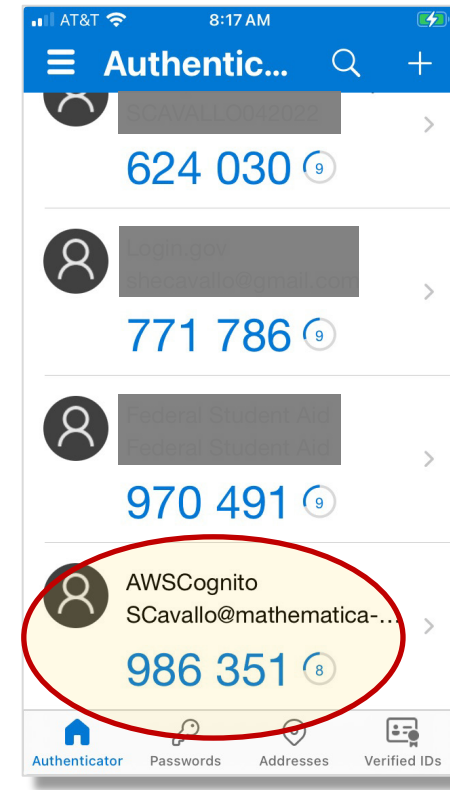
Microsoft

The authenticator app

- Locate the app on your phone.



- Grab the verification code.



The New Dashboard

We want to hear from you



- Development of the dashboard is ongoing



- Your feedback over the next few months will inform its development



- Play with the system, and send us your input

It's just 2 clicks!

The screenshot shows the PREP Performance Measures dashboard. The top navigation bar includes the PREP logo, 'FY2022 Bey Slays CPREP', 'Summer 2024 Submission Period', a menu icon, a help icon (circled in red), and a user profile 'BEY'. The left sidebar lists navigation options: Home, DATA ENTRY, Status Report, Grant, Providers, Participant Surveys, Dashboard, Users, and Help (highlighted). The main content area is titled 'Help' and contains the following text: 'For questions about PREP Performance Measures, the Performance Measures data submission portal, or the Performance Measures dashboard please contact PREPPerformanceMeasures@mathematica-mpr.com or call toll-free 855-267-6270.' This email address is circled in red. Below this, it says 'For any additional questions or technical assistance requests, contact your Project Officer.' and 'For step-by-step instructions on the data submission process, please review the [PREP Performance Measures Portal User Guide](#).' At the bottom, there is a link for '[PREP Performance Measures Support Site](#)'. A red arrow labeled 'CLICK #1' points to the help icon in the top right. Another red arrow labeled 'CLICK #2' points to the circled email address.

With just **2 clicks**,
you can send us
your **feedback** on
the dashboard.

The dashboard is a powerful tool

- Your data are a powerful ally!
- The dashboard can help you:
 - Better understand how your program is operating over time
 - Improve the programming you provide to the young people in your community
 - Share your story



Q&A (and feedback!)

We're here to help!

For more support, contact the Mathematica
PREP Performance Measures technical assistance team.

PREPPerformanceMeasures@mathematica-mpr.com

1-855-267-6270 (toll-free)